

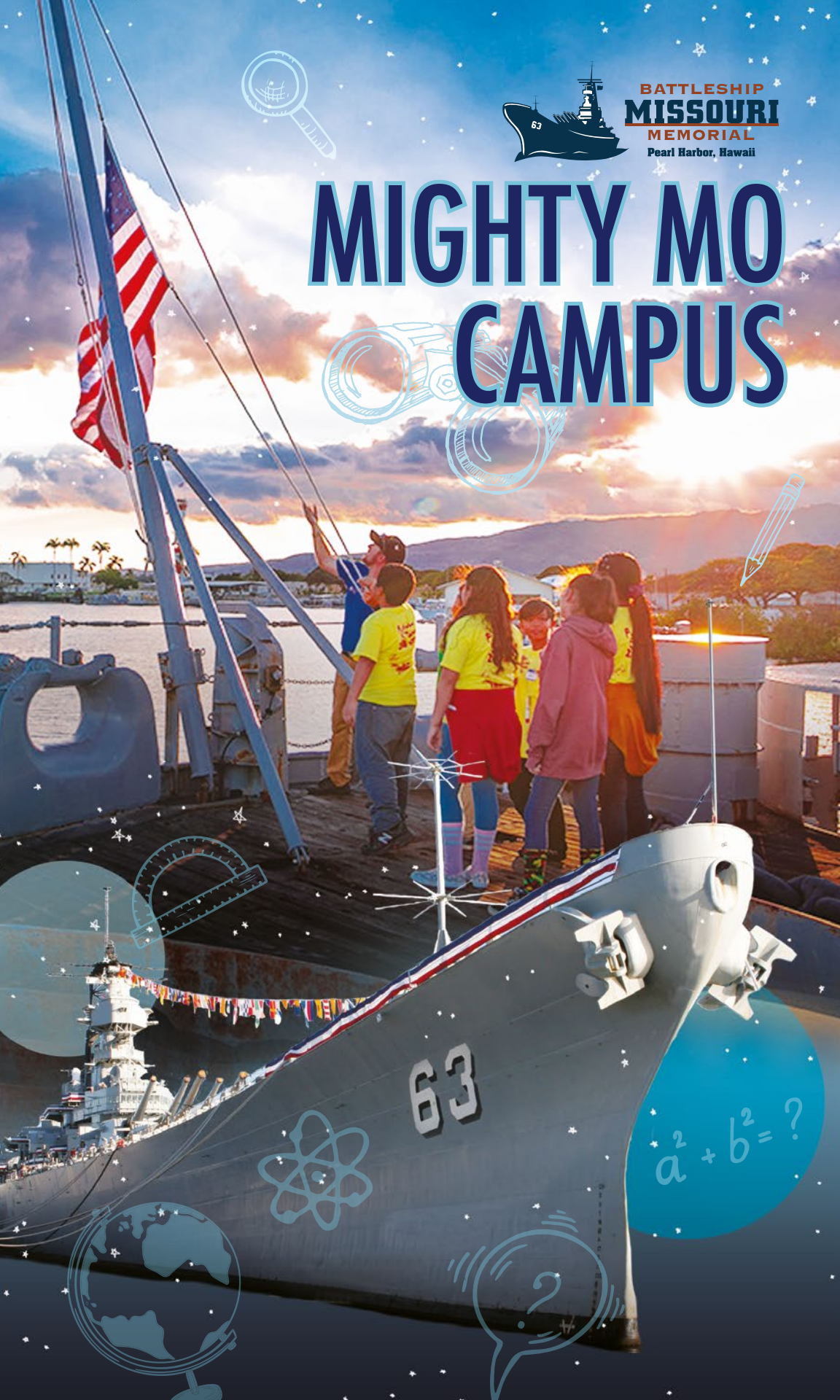


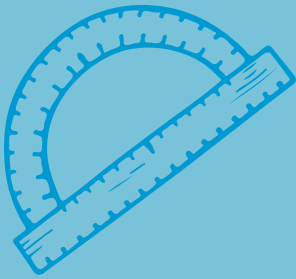
**BATTLESHIP**  
**MISSOURI**  
**MEMORIAL**  
Pearl Harbor, Hawaii

# MIGHTY MO CAMPUS



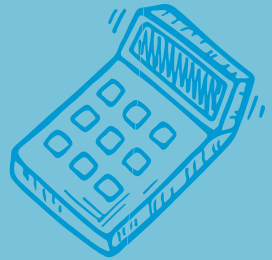
$$a^2 + b^2 = ?$$





## THE BATTLESHIP MISSOURI MEMORIAL'S MISSION

The USS Missouri Memorial Association is dedicated to preserving the Battleship Missouri and sharing her story and place in history.



## VISION

The Battleship Missouri Memorial is an international symbol of peace and strives to be a world class experience that inspires, educates, and motivates all nationalities and generations.



## WHERE HISTORY COMES TO LIFE

Welcome aboard! Explore over 75 years of history on the Battleship Missouri with engaging educational programs and experiences. We offer a program for every grade level where teachers, students and parents can learn about the Mighty Mo's role in World War II, the Korean War and Operation Desert storm. So, come aboard the biggest classroom you will ever encounter and learn about our nation's legacy.

## HISTORY TOURS

The Mighty Mo is a tremendous venue for students young and old to explore "hands-on history". Choose between two tours: self-guided or guided and walk the decks of this historic battleship. Students will experience what life was like for thousands of Sailors and Marines, as well as standing on the Surrender Deck, the official site of the end of WW II. So, plan a field trip for your class and discover all the stories of this historic ship. Maximum group size for guided tours is 80 students.



### Financial Grant Assistance

Thanks to charitable foundations, and our donors we can provide financial assistance to some qualifying schools. Financial assistance is available for qualifying Hawaii Title I schools. To qualify, schools and organizations must have at least 47% of their students receiving free or reduced cost lunches. This financial assistance will depend on the availability of funds. The maximum discount per student is 50%. When making your reservations ask for the Title I application or email us at: [education@ussmissouri.org](mailto:education@ussmissouri.org).



## EDUCATION OUTREACH AND VIDEO TELECONFERENCE

### Outreach

The story of the “world’s most famous battleship” is brought to life for students in grades 4 to 12 with a free 30-minute traveling historic presentation. Presenters will share with students a virtual tour of the battleship while painting a captivating picture of the Mighty Mo’s unique history. Students will marvel at the sacrifice and resolve of the Sailors who served aboard the ship.

### Worldwide Video Teleconference

If you are unable to bring your class for a visit to the ship, you can connect with the Battleship Missouri Memorial through video teleconferencing. Bring your school on a virtual tour and presentation about the history of this great battleship (with emphasis on WWII) followed by questions and answers about the ship and the war in the Pacific.

Our Missouri Skype in the Classroom is accessible to all registered Microsoft Education Community members. Registering is free and easy. It can be accessed by going to <https://education.microsoft.com> . Once registered just search for USS Missouri to find us and request a Skype in the classroom presentation. (The Battleship Missouri has visited 13 countries and logged over 922.000 miles across the world through Skype in the Classroom. We are a Microsoft Innovative Educator, an Education Community Influencer, and an Education Community Contributor.)

### Music Exhibition Program

We welcome school bands, choirs and dance groups to pay honor and tribute by sharing the gift of music to the Battleship Missouri Memorial, our veterans and all those who had made the ultimate sacrifice for our country. Groups perform pier-side in the shadow of the “Mighty Mo”. There is no better way to cap your visit to Pearl Harbor than to perform in grateful remembrance of those who have made this country free.



# OVERNIGHT ENCAMPMENT

## Experience the Life of a Battleship Sailor

### About the Program

The Battleship Missouri Overnight Encampment is designed to foster an understanding of history, leadership and team building among the youth of Hawaii, the United States and the World.

### Life at Sea

Participants will experience the life of a battleship sailor through a series of tours and activities while on their overnight stay. Eating in the enlisted crew's mess and sleeping in the enlisted crew bunks gives students and adults a better understanding of what it is like to live and work in the U.S. Navy.

### Hands-on History

Students will learn about the unique history of the Battleship Missouri. The ship's service in World War II, the Korean War and the Gulf War is discussed in detail at historical locations throughout the ship. The night concludes with a moving presentation on the Surrender Deck, the official site of the end of WW II.



# A SHIP FULL OF SMILES

## Dental Health and the Mighty MO

Students will be able to take a field trip to historic Pearl Harbor, come aboard the Battleship Missouri, participate in fun dental health lessons and activities to reinforce what was learned in the classroom. Students who tour the ship will visit the restored dental clinic as it looked in the early 1990's.

### Program Components

Our dental lessons use educational materials and activities from the internationally recognized American Dental Association (ADA) "Smile Smarts!" an oral health curriculum.

### What makes the program unique?

Experiencing life aboard a Battleship and realizing the ship is like a floating city. Students eat lunch on the mess decks where the sailors ate onboard ship. Each student takes home a toothbrush and toothpaste.

### Participation

It is designed for students in grade K-1 with up to 50 students per day.







## STOWING SUPPLIES

### A measurement Activity

Students will role play as crewmembers of the USS Missouri who are tasked with stowing supplies within the ship's many different storage rooms. The "supplies" come in the form of various-sized, rectangular boxes. Before these supplies are stored away their dimensions must be recorded.



### Purpose

- Students will practice using a variety of measuring devices such as a ruler, a meter/yardstick, and a measuring tape.
- Students will gain an understanding of which measuring device works best for small, medium, and large objects.
- Students will practice how to measure the dimensions of a rectangular object.

### Program Components

An in-school pre-visit includes a story and activity and is followed by a shipboard visit of 2 hours.

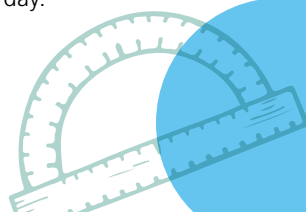
### What makes the program unique?

Experiencing life aboard a Battleship and applying math skills in a real-world environment. Students eat lunch on the mess decks where the sailors ate onboard ship.

### Participation

It is designed for students in grade 2 with up to 50 students per day.

$$a^2 + b^2 = ?$$



## THIRD GRADE IN-SCHOOL S.T.E.M. ACTIVITY

This In-School Presentation has NO COST and will include reading the book "My Grandpa's Battleship Missouri Tour" and include a STEM activity where paper helicopters are dropped on a target and students will measure the distance landed from the target. Students will tally the information, discuss the data and create a histogram to represent and analyze their data.

### Purpose

- Students build simple paper helicopters and drop them on targets.
- Students make predictions regarding precision and accuracy.
- Students will determine the frequency that the helicopter lands near the target.
- Students create a histogram to represent and analyze their data.

### What makes the program unique?

Experts from the Battleship Missouri share stories of shipboard life and make this activity relevant to everyday life. Prescribed duration of visit: 1 hour per classroom.



#### Data Collection

Complete 25 drops. Observe where the whirlygig lands on the target each time. Measure and keep a tally of how far each drop is from the target. Be consistent in the height of your drops, and your measurement method. Calculate the frequency of where the whirlygig lands by dividing the tally for each interval by the total number of drops.

DISTANCE INTERVAL	0 cm (direct hit)	1-10 cm	11-20 cm	21-30 cm	31-40 cm	41-50 cm	Greater than 50 cm
TALLY							
FREQUENCY							



# JOURNEY WITH THE STARS

## How do we navigate

The Journey with the Stars program at the Battleship Missouri Memorial is an interactive learning experience for fourth grade students and teachers. Throughout the lesson, students demonstrate critical thinking skills in math, science, language arts, history, and public speaking.

### Purpose

Participation in this program provides students with a greater understanding of Hawaiian history, celestial navigation and stellar astronomy, and the use of current technology for aquatic navigation.

### Participation

It is designed for students in grade 4 with up to 25 students per day.

### Program Components

The Journey with the Stars program includes pre-visit and post-visit materials and lesson plans for classroom teachers to use to help enrich the museum experience. Participation in this program includes an engaging and interactive museum visit with a planetarium-like experience, hands-on practice with current GPS technology, observation and application of traditional celestial navigation tools and an overview of the discovery and settlement of Polynesia and the Polynesian Islands.

### What makes the program unique?

The program takes place onboard the Historic Battleship Missouri. Participation in this program provides students with a greater understanding of Hawaiian history, celestial navigation and astronomy, and the use of current technology for aquatic navigation.



## UNDERWAY WITH MIGHTY MO ROBOTICS

During the USS Missouri Robotics program, students will construct robots using the LEGO® Mindstorms EV3 Robotics set. The robots they construct must be designed to complete missions and in order to be successful, the requirements of the mission must be incorporated into the robot design. In engineering, these requirements are called criteria and constraints.

### Purpose

To expose students to STEM (Science Technology Engineering and Math) in a fun, challenging, and engaging way, aboard USS Missouri. For this activity, students will gain practice designing and building a vehicle that meets certain engineering design criteria and constraints.

### Participation

It is designed for students in grades 4-6, with up to 25 students per day.

### Program Components

An in-school pre-visit is followed by a shipboard visit of 3 hours. They will spend time constructing, programming and testing their robots, using the LEGO® Mindstorms EV3, and the EV3 programming software on the computer. Once their robots are built and programmed, they will enter the mission room to run their tests and evaluate their performance.

### What makes the program unique?

Unlike any other robotics program in the state, is the fact that it is housed and hosted aboard the only Battleship Museum in Hawaii. Our missions and tests for the robots are based on real-world Naval missions (Combat, Search and Rescue, Cargo Transport, etc.)

### How the robots work

The robots work by using various sensors such as, rotation, light, sound, ultrasonic and touch. The sensors send input information to the “brain” of the robot (the EV3 intelligent brick) which processes this information and sends a signal via cables to the output ports and ultimately to the rotation sensors to allow the robot to move.

### What else

Pre-visit lesson ideas are provided to teachers which help to augment the shipboard visit.



## BOY SCOUT AMERICAN HERITAGE MERIT BADGE

Every Scout takes an oath that includes duty to his country. A better understanding of American heritage, the ways in which the past has led to our present nation is key to truly knowing what it means to be an American.

Come aboard an American Hero and learn more about American Heritage. Boy Scout troops are encouraged to attend our merit badge program being held aboard the Battleship Missouri Memorial. While immersed in history on this historic battleship, Scouts will have the opportunity to work on requirements for the American Heritage Merit Badge on one of 5 available dates each year.





## ANCHOR SCHOOL PROGRAM

### USS Missouri Partner School Program

A key component in the Battleship Missouri's outreach to our local community is its successful Partner School Program. This innovative program establishes relationships with local schools by engaging students in one of the many USS Missouri educational programs offered aboard the ship and at the school site.



Recently, Aiea Elementary school partnered with the USS Missouri providing all students in grades K-6 with an opportunity to participate in experiential learning opportunities. Students participated in grade appropriate education programs such as Journey with the Stars, Dental Hygiene, Robotics, and the Overnight Encampment.



Partner Schools assist the Battleship Missouri by sharing program benefits with other schools and help to share the story and place in history of the USS Missouri. Ask us about becoming a partner school.



## FAQ

### How many students can I bring?

Programs vary, but for Guided tours and Encampments the maximum is 80 students.

### How long do the tours last?

The guided tour lasts 35 minutes but, allow an additional 30 minutes to explore the entire ship.

### How much does it cost?

Contact us for program cost.

### How do I pay for visit?

We accept cash, check, credit cards or purchase order.

### What do we need to bring for the encampment?

Ask us for the complete Encampment Guidebook which covers what to and what not to bring.



## TESTIMONIALS

**“The most awesome field trip I have ever been on.”**

– Alexis, student Pearl Harbor Kai Elementary

**“I was amazed by how much history and education was learned by my students and myself”**

– Sherry, teacher Hau’ula Elementary

**“After the trip the students had a better appreciation for the history that is in their own backyards.”**

– Jennifer, teacher Makaha Elementary

**“It gave the students the best type of learning experience. Hands on. They will never forget it.”**

– teacher Pearl Harbor Elementary

**“Staying aboard the U.S.S. Missouri is a once-in-a-lifetime event, and we learned so much during our trip.”**

– student

**“If any school is looking for a new and different way to experience history, the USS Missouri encampment program is the way! We highly recommend the program and we will certainly be back.”**

– teacher

**“The experience exceeded my expectations. I didn’t expect the staff to be so knowledgeable or courteous. Awesome experience.”**

– teacher

## FOR MORE INFORMATION ABOUT EDUCATION PROGRAMS AT THE BATTLESHIP MISSOURI MEMORIAL

### EDUCATION DIRECTOR:

**Dan Parsons**  
**808-455-1600 x240**  
**[danp@ussmissouri.org](mailto:danp@ussmissouri.org)**

### ENCAMPMENT COORDINATOR:

**Matt Lincoln**  
**808-455-1600 x250**  
**[mattl@ussmissouri.org](mailto:mattl@ussmissouri.org)**

### SCHOOL PROGRAMS COORDINATOR:

**Linda Imamura**  
**808-455-1600 x259**  
**[lindai@ussmissouri.org](mailto:lindai@ussmissouri.org)**

### OUTREACH COORDINATOR:

**Neil Yamamoto**  
**808-455-1600 x254**  
**[neily@ussmissouri.org](mailto:neily@ussmissouri.org)**

### PERFORMING ARTS COORDINATOR:

**Bobi Baclaan**  
**808-455-1600 x247**  
**[bobib@ussmissouri.org](mailto:bobib@ussmissouri.org)**

**[Education@ussmissouri.org](mailto:Education@ussmissouri.org)**  
**<https://ussmissouri.org/get-involved/EDUCATION>**

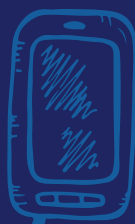


## SOCIAL MEDIA

**All Hands on Deck** – Educating our youth is a local, national and global partnership. Stay connected with the history available at your fingertips and join the USS Missouri Memorial Association's Mighty Mo Campus Facebook Group. Here we'll share fun facts, quick tips for lessons in war and peace, keep you in line with the latest educational opportunities at the Mighty Mo and provide a platform to collaborate with other Educators in the community.

Search Mighty Mo Campus in Facebook Groups to join today!

<https://www.facebook.com/groups/828170310850590>



## MEMBERSHIP

**Join us!** Support the Battleship Missouri by joining the Friends of the Mighty Mo. Your support goes directly towards supporting key mission initiatives including: Preservation, Restoration, Education, Community Outreach. Ask about becoming an Educator Member today by calling (808)-455-1600 Ext. 244.





USS Missouri Memorial Association, Inc.  
63 Cowpens Street, Honolulu, HI 96818  
[www.ussmissouri.org/get-involved](http://www.ussmissouri.org/get-involved)